



Potters Lodge Sawn Moor Avenue

Thurcroft, Rotherham, S66 9DX

Offers Over £190,000



4



1



1



Potters Lodge Sawn Moor Avenue



Description

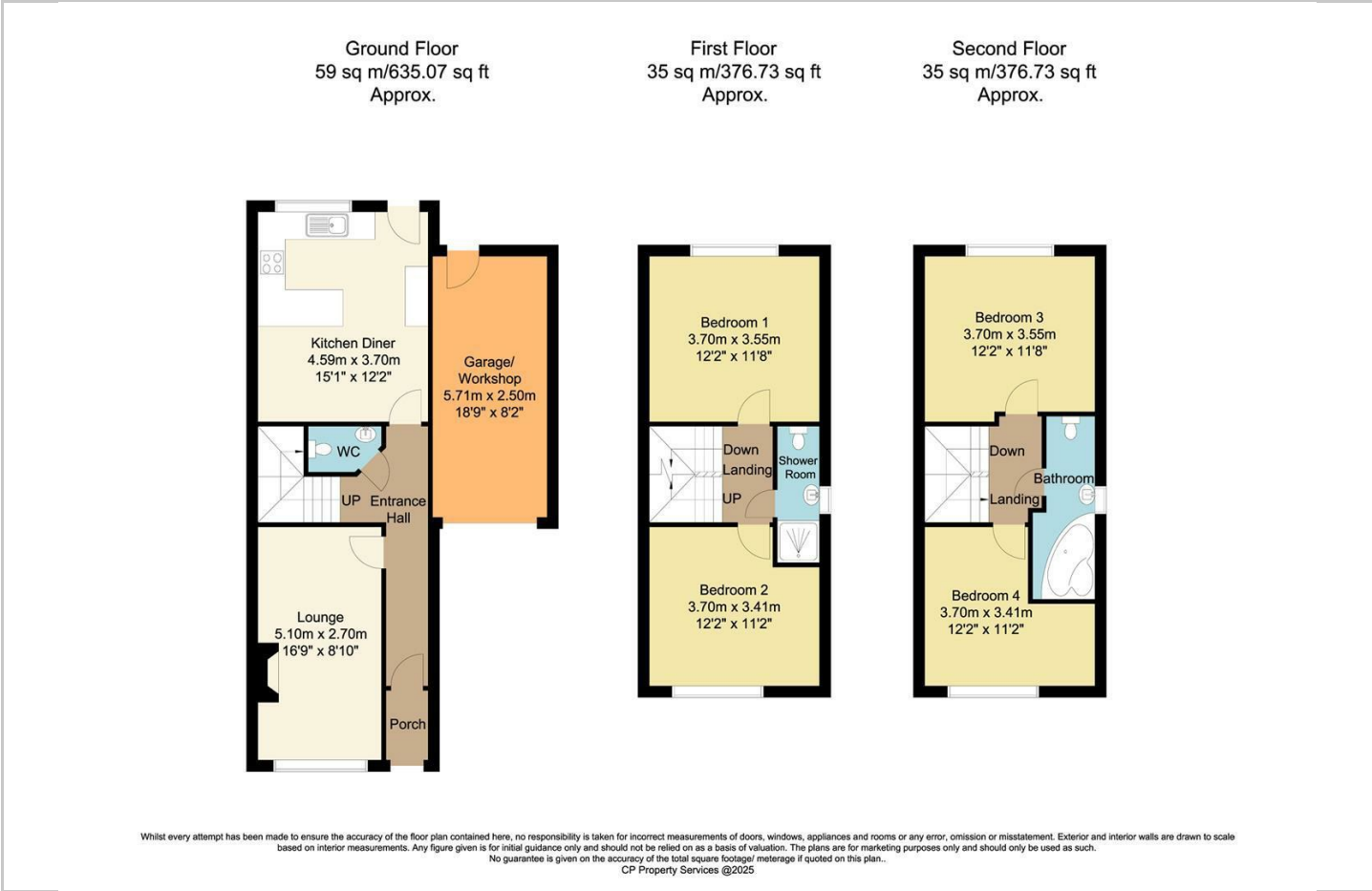
Viewing is advised on this spacious four-bedroom end-townhouse set over three floors in a quiet Thurcroft cul-de-sac. Perfect for families, it offers a flexible layout with generous room sizes and modern finishes throughout. The ground floor features a stylish kitchen diner, a separate lounge, and a convenient WC. Upstairs, four double bedrooms are complemented by a shower room and family bathroom. A private rear garden, garage/workshop, and driveway parking add practicality and outdoor appeal. Ideally located near schools, shops, and motorway links, it offers space, comfort, and convenience.

- Generously proportioned four double bedrooms, offering flexible family or guest accommodation
- Stylish and spacious lounge with a feature fireplace, ideal for relaxing or entertaining
- Detached garage/workshop plus driveway parking, providing excellent storage and multi-use potential
- Contemporary open-plan kitchen and dining area with integrated appliances and direct garden access
- Well-maintained private rear garden with lawn, patio, and raised beds – perfect for outdoor living
- Quiet residential setting with excellent transport links to Rotherham, Sheffield, and Doncaster via M1/M18





Floor Plan



Area Map



Viewing

Please contact our ELR Wickersley Office on 01709 917676 if you wish to arrange a viewing appointment for this property or require further information.

These particulars, whilst believed to be accurate are set out as a general outline only for guidance and do not constitute any part of an offer or contract. Intending purchasers should not rely on them as statements of representation of fact, but must satisfy themselves by inspection or otherwise as to their accuracy. No person in this firms employment has the authority to make or give any representation or warranty in respect of the property.

Energy Efficiency Graph

